



N1206 19 Sun Street, Hackney, London, EC2A 2FJ

£1,153 Per Week



N1206 19 Sun Street, Hackney, London, EC2A 2FJ

**£1,153 Per Week**

Welcome to One Crown Place, located on Sun Street in the heart of London's vibrant EC2A postcode. This stunning apartment boasts a spacious reception room, perfect for entertaining guests or simply relaxing after a long day. With two cosy bedrooms and two modern bathrooms, this property offers both comfort and convenience.

Spanning across 80 square feet, this apartment provides ample space for all your needs. Whether you're looking for a stylish city pad or a prime investment opportunity, this property ticks all the boxes. The sleek design and contemporary finish make it a true gem in the bustling city of London.

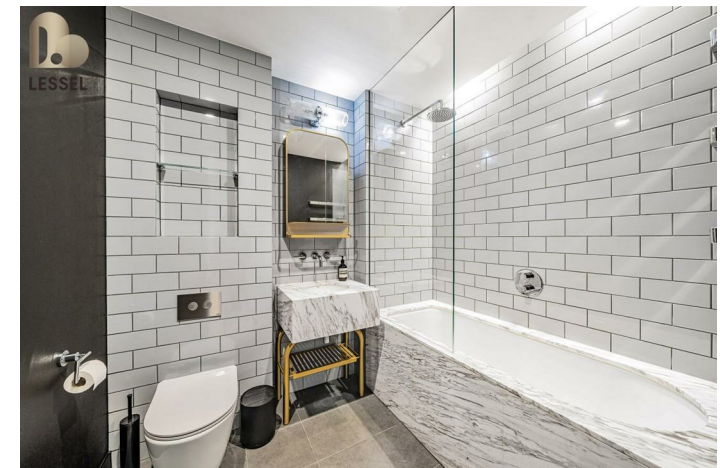
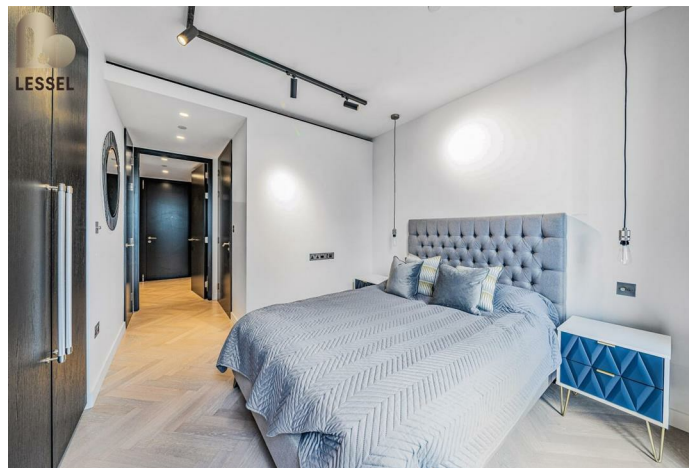
Situated in a prime location, residents of One Crown Place can enjoy easy access to a plethora of amenities, including trendy cafes, fine dining restaurants, and boutique shops. With excellent transport links nearby, commuting around the city is a breeze.

Don't miss out on the chance to own or rent this fantastic apartment in one of London's most sought-after areas. Contact us today to arrange a viewing and experience the epitome of city living at One Crown Place.

## Description



## Situation

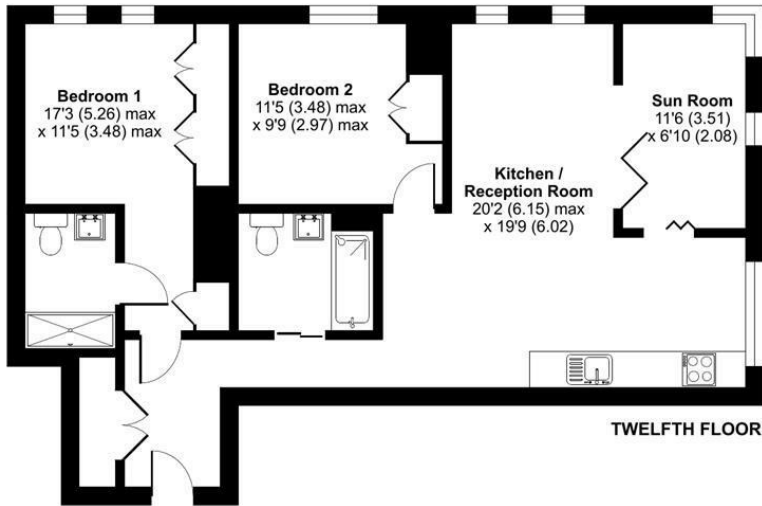


Furnished  
Council Tax Band: F  
Available: 20th July 2026

## Floor Plans

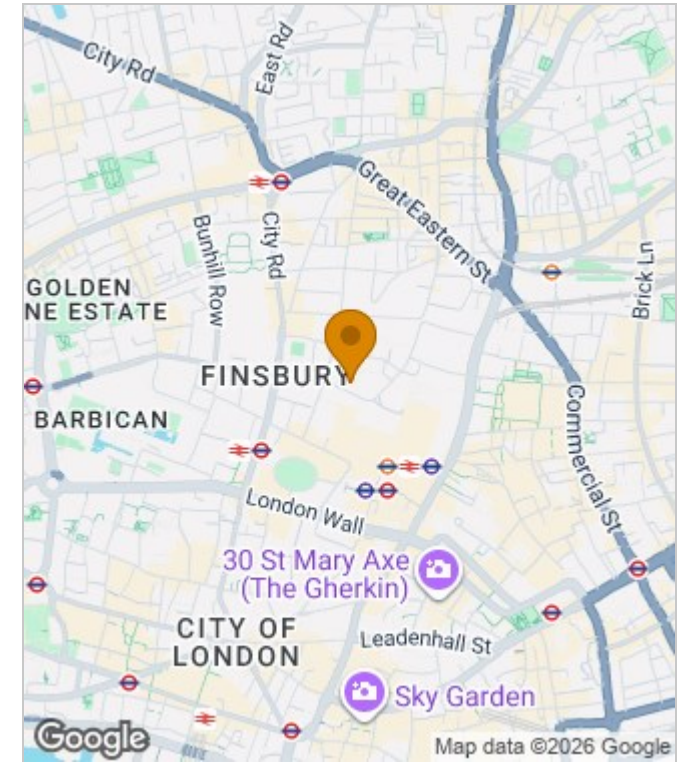
### Sun Street, London, EC2A

Approximate Area = 843 sq ft / 78.3 sq m  
For identification only - Not to scale

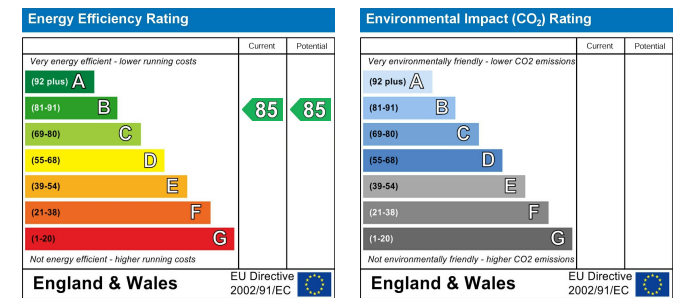


Floor plan produced in accordance with RICS Property Measurement Standards incorporating International Property Measurement Standards (IPMS2 Residential). © nichecom 2024. Produced for Lessel Ltd. REF: 1115935

## Area Map



## Energy Performance Graph



These particulars, whilst believed to be accurate are set out as a general outline only for guidance and do not constitute any part of an offer or contract. Intending purchasers should not rely on them as statements of representation of fact, but must satisfy themselves by inspection or otherwise as to their accuracy. No person in this firm's employment has the authority to make or give any representation or warranty in respect of the property.

3 Shortlands, Hammersmith, London, W6 8DA

Tel: 020 8124 1073 Email: [management@lessel.co.uk](mailto:management@lessel.co.uk) <https://www.lessel.co.uk>